



12 Upper Dukes Road, Douglas, Isle of Man, IM2 4BA
Asking Price £355,000

- Immaculately Presented Three Bedroom One Bathroom Townhouse
- Tiered Rear Garden With Patio And Lawned Area
- Spacious Living And Dining Rooms With High Ceilings
- Fully Powered Single Garage Offering Excellent Storage
- Stunning Extended Kitchen Dining Room Opening Onto Sun Terrace
- Recently Fitted Boiler, UPVC Double Glazing Throughout



An immaculately presented three-bedroom, one-bathroom mid-terrace townhouse arranged over three spacious floors, perfectly positioned just a stone's throw from the local park. Combining charming period features with stylish modern improvements, this beautifully maintained home offers generous living accommodation ideal for families and professionals alike.

The welcoming entrance leads into a bright and elegant living room, enhanced by impressive high ceilings and an abundance of natural light. Flowing seamlessly from the living room is a spacious open-plan dining room, creating the perfect setting for both everyday living and entertaining guests.

The first floor comprises two well-proportioned double bedrooms, a comfortable single bedroom, and a contemporary family bathroom, all presented to an exceptional standard.

A standout feature of the property is the impressive lower ground floor, where a stunning single-storey extension has created a superb open-plan kitchen and dining area. Fitted with modern cabinetry and quality finishes, this space enjoys direct access to a delightful sun terrace, providing an excellent indoor-outdoor lifestyle. Also on this level are a practical utility room and a convenient separate WC.

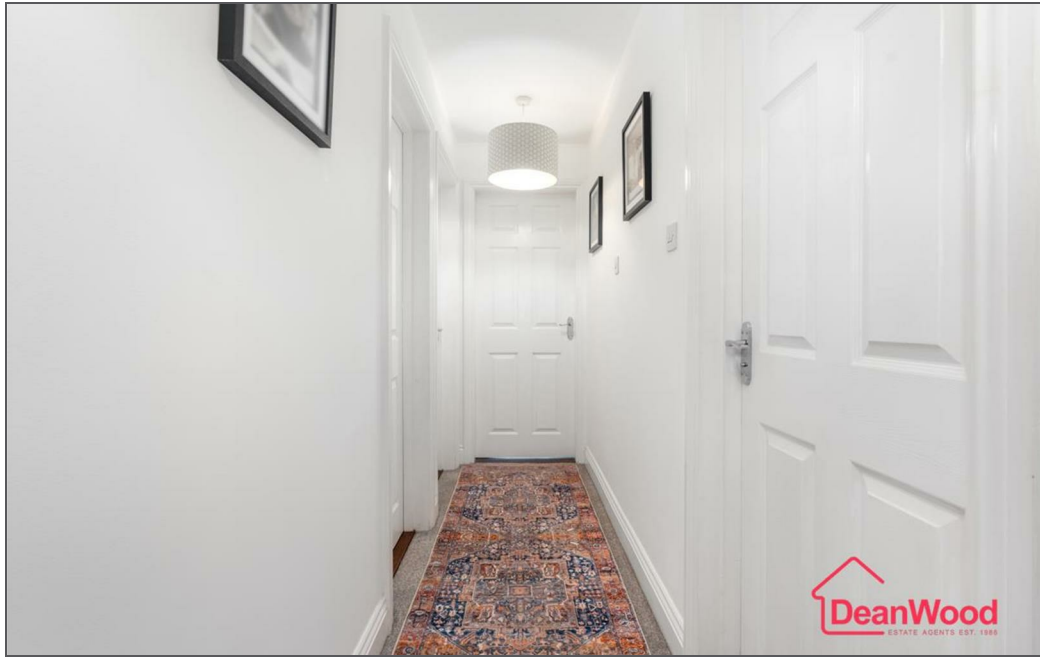
Externally, the rear garden is arranged over several tiers, featuring a concrete patio perfect for outdoor dining, alongside a lawned area ideal for children or gardening enthusiasts. The property further benefits from full uPVC double glazing, oil-fired central heating with a recently installed boiler, and the rare advantage of a fully powered single garage, offering secure parking, excellent storage, or workshop potential.

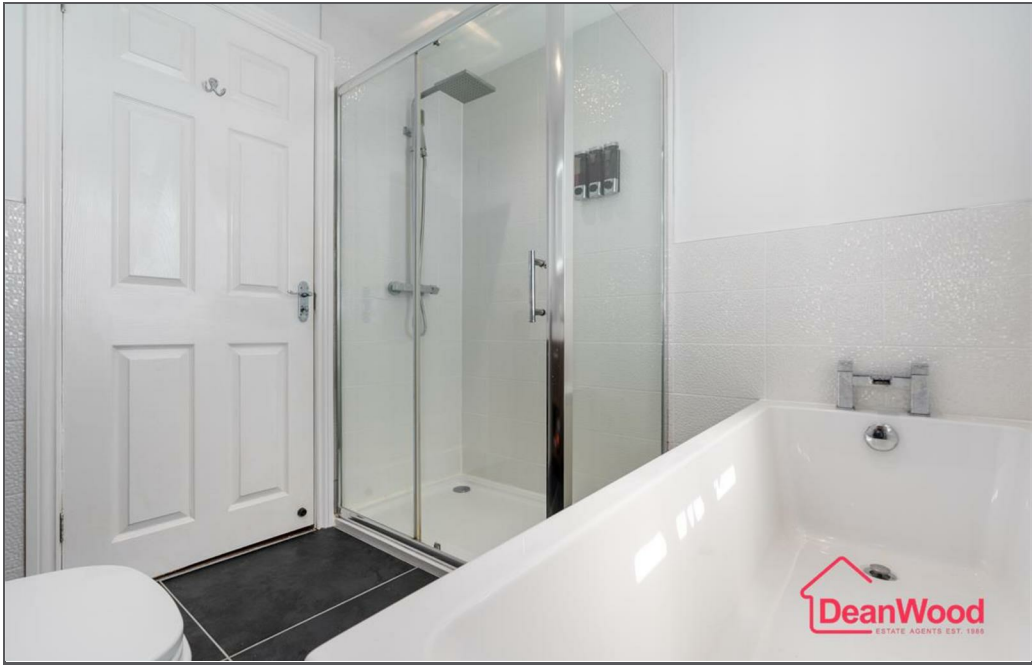
Beautifully presented throughout and ready to move straight into, this exceptional townhouse offers spacious accommodation, modern comforts, and a highly desirable location close to local amenities and green spaces.







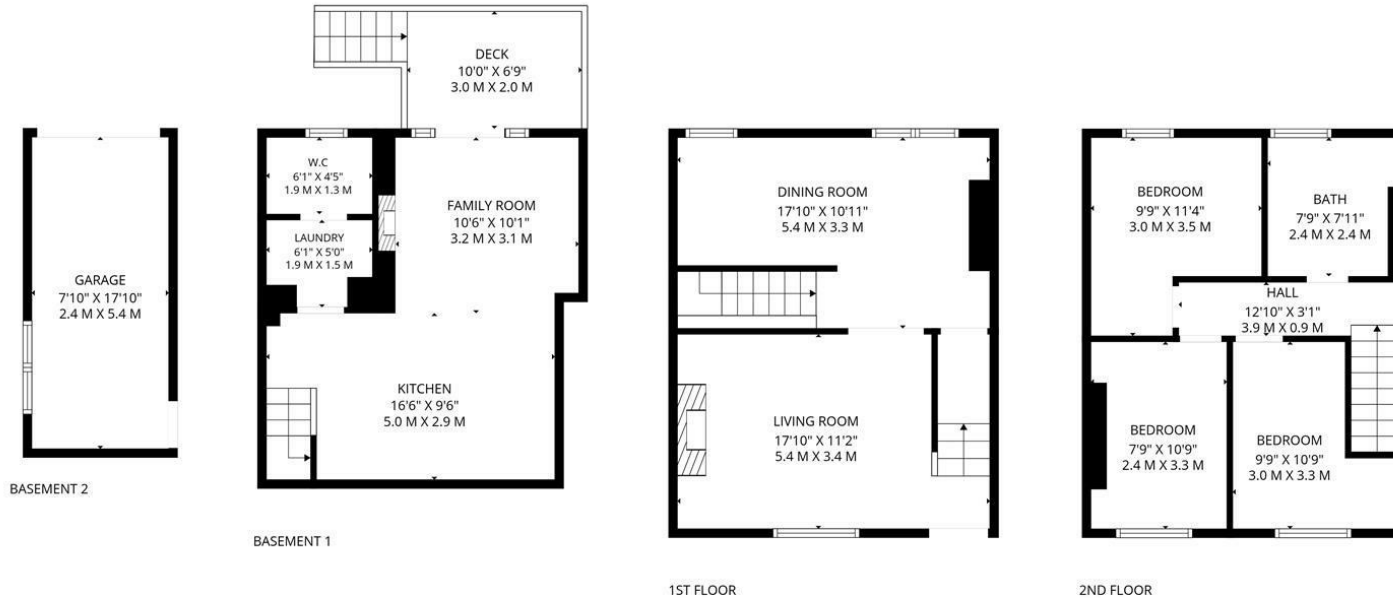






12 Upper Dukes Road, Douglas, Isle of Man, IM2 4BA





TOTAL: 1136 sq. ft, 105 m2

Basement 2: 0 sq. ft, 0 m2, Basement 1: 336 sq. ft, 31 m2, 1st floor: 400 sq. ft, 37 m2, 2nd floor: 400 sq. ft, 37 m2
 EXCLUDED AREAS: GARAGE: 140 sq. ft, 13 m2, DECK: 82 sq. ft, 8 m2, WALLS: 116 sq. ft, 11 m2

FLOOR PLAN CREATED BY INVISION MEDIA & MARKETING. MEASUREMENTS DEEMED HIGHLY RELIABLE BUT NOT GUARANTEED.



DOUGLAS

37 VICTORIA STREET
 DOUGLAS
 ISLE OF MAN IM1 2LF

T 01624 620606
F 01624 677363
E info@deanwood.co.im

CASTLETOWN

COMPTON HOUSE
 9 CASTLE STREET CASTLETOWN
 ISLE OF MAN IM9 1LF

T 01624 825995
F 01624 825996
E castletown@deanwood.co.im

RAMSEY

LEZAYRE HOUSE
 87 PARLIAMENT STREET
 RAMSEY ISLE OF MAN IM8 1AQ

T 01624 816111
F 01624 816588
E ramsey@deanwood.co.im

These particulars are for information purposes only. They do not constitute or form any contract nor should any statement contained herein be relied upon as a representation of fact. Neither the vendor nor DeanWood Agencies Limited ('the firm'), nor any officer or employee of the firm accept liability or responsibility for any statement contained herein. The vendor does not by these particulars, nor does the firm, nor does any officer or any employee of the firm have any authority to make or give any representation or warranty whatsoever as regards the property or otherwise. It is the sole responsibility of any person interested in the property described in these particulars to make all proper enquiries and searches to verify the description of the property and all other particulars herein.

FOR MORE PROPERTIES VISIT OUR WEBSITE @ deanwood.im